



*Safe Start
Back To School!*

Open House- October 2020

Follow the Rules, Return to Schools



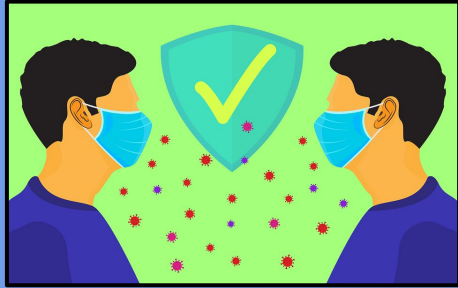
Outsmart Rona

**Wear a mask while you are in Dearborn Public Schools,
so Rona is kept out of school, not you**

#MaskUpDearborn

- ❖ **Masks are required to enter a District building**
- ❖ **Maintain social distancing**
- ❖ **Avoid sharing personal items such as pens, phones, cups, and utensils**
- ❖ **Wash hands (soap and water or hand sanitizer)**

How COVID-19 Infects Us



Intensity of Exposure

How much virus were you exposed to?

Was the person coughing/sneezing without a mask?

Where you less than 6 feet and face-to-face?

Duration of Exposure

Were you exposed for longer than 15 consecutive minutes?

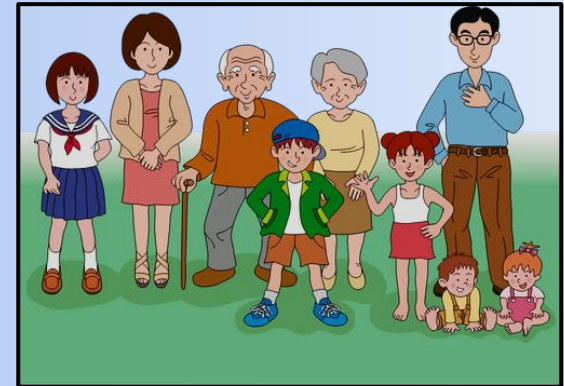


Personal Health

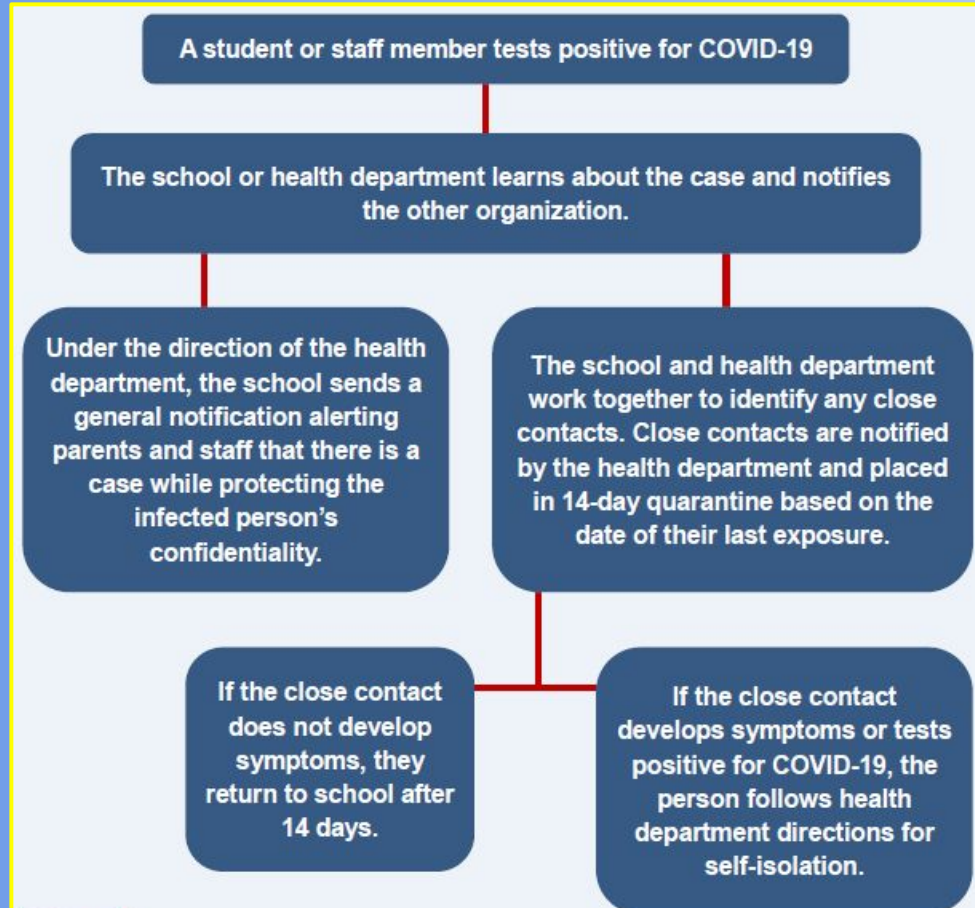
Do you have a compromised immune system?

Age

All age groups can get COVID-19 but data shows that those 60 and over may be more adversely affected.



When Someone gets COVID-19



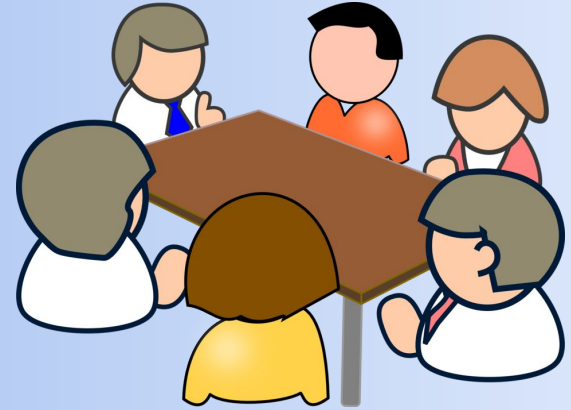
- ❖ **School and health department learn about the case**
- ❖ **Contact tracing begins**
- ❖ **Quarantine close contacts**

What is a Close Contact

A close contact typically is someone who was within six feet of an infected person for at least 15 consecutive minutes.

The large majority of close contacts do not get COVID-19, but we must be cautious because the virus is very contagious.

Close contacts are not yet known to be infected therefore, the contacts to those contacts do not need to be quarantined and do not need to be identified or contacted.



What is a Close Contact

For Example-

Bob sits next to Moe in class. Moe gets sick with COVID-19. Bob needs to be quarantined, even though he is healthy at this time.

Bob plays on the football team, and Moe does not. No one on the football team has been near Moe. Therefore, the football team doesn't need to be notified about Moe being sick or worry about Bob being quarantined. Odds are, Bob will not get sick and will be back to school and football in two weeks.



When To Stay Home

Students and staff should not go to school or any school activities if they are having symptoms of COVID-19.

Symptoms of COVID-19

Shortness of breath or difficulty breathing*

Fever or chills*

Fatigue

Headache

Sore throat

Nausea or vomiting

Cough*

Muscle or body aches

New loss of taste or smell

Congestion or runny nose

Diarrhea

* These are most common



**Don't let Rona take
the driver's seat**

**Wear a mask while you work Dearborn Public Schools,
so Rona is left behind, not you**

#MaskUpDearborn

COVID 19 Information

Back to school during the pandemic



What happens when someone at school gets COVID-19?

A student or staff member tests positive for COVID-19

The school or health department learns about the case and notifies the other organization.

Under the direction of the health department, the school sends a general notification alerting parents and staff that there is a case while protecting the infected person's confidentiality.

The school and health department work together to identify any close contacts. Close contacts are notified by the health department and placed in 14-day quarantine based on the date of their last exposure.

If the close contact does not develop symptoms, they return to school after 14 days.

If the close contact develops symptoms or tests positive for COVID-19, the person follows health department directions for self-isolation.



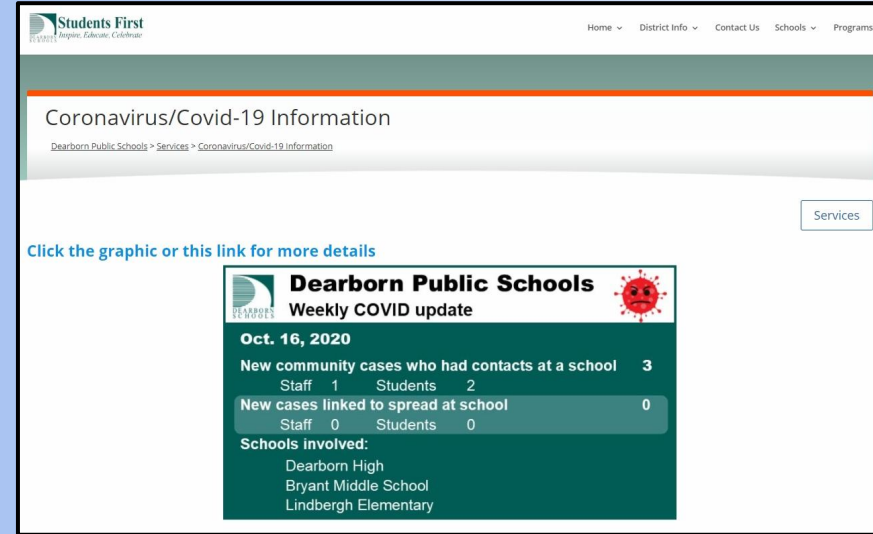
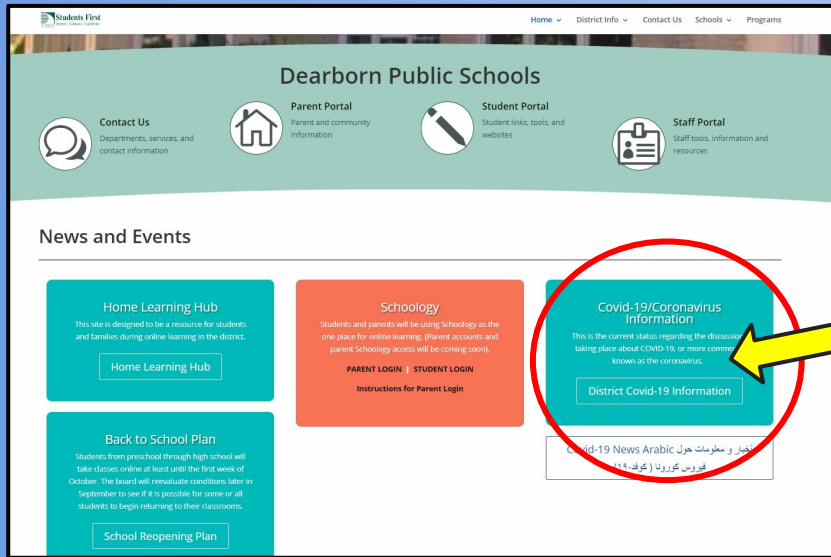
Disclaimer—This information is based on the latest information and is subject to change. (8/14/20)

A more detailed document pertaining to items in this presentation can be found at:

<https://dearbornschools.org/services/coronavirus-covid-19-information/>

COVID 19 Information

Visit the
[Dearborn Public Schools webpage](#)



[Special COVID 19
Information section](#)

Click here to
access the
COVID information
webpage

Safe Start Back To School!

As long as there are COVID-19 cases in the community, there is no way to prevent all risk of COVID-19 spread in schools. The goal is to keep the risk as low as possible and keep school and school activities as safe as possible. If students do not go to school, they would still be at risk of contracting COVID-19 from their interactions in the community.

